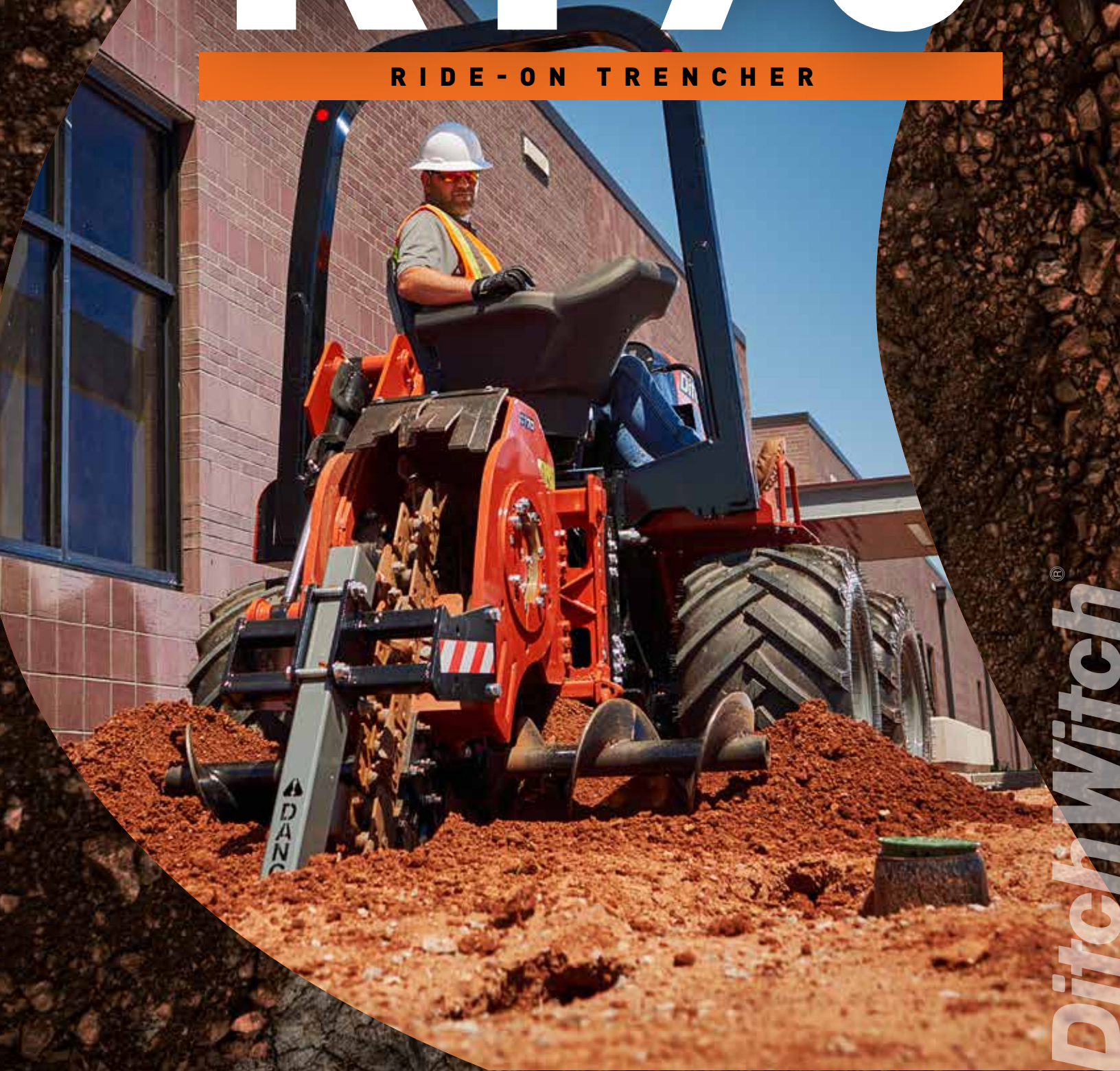




RT70

RIDE-ON TRENCHER



Ditch Witch®

RT70

The stops and starts you make while trenching add time to your jobs. The Ditch Witch® RT70 hands that time right back to you with productivity features that keep you moving—like shift-on-the-fly capability, letting you work without stopping to shift.

1 Anti-stall technology prevents your engine from stalling and dying when you hit rock or debris while working, clearing the chain at the push of a button.

2 The push-button, return to center feature allows you to automatically return the rear axle to center. And, when activated, actively maintains axle position.

3 Powered by a 72-hp Yanmar® Stage V Compliant diesel engine, the RT70 is built for heavy-duty trenching, plowing and microtrenching jobs.

4 Advanced cruise control senses engine load, automatically adjusting ground drive speeds to changing conditions.

6 Tires and tracks can be easily interchanged, keeping you productive across weather and jobsite conditions.

5 New blade assembly allows you to easily remove or install backfill blades more cost-effectively.



RT70

OPERATOR'S STATION



1 The RT70's redesigned, advanced operator's station features a 120-degree swivel seat, more legroom and enhanced visibility.

2 An advanced, patented centrifugal cooling system pulls heat and exhaust away from the operator for more comfortable and productive hours on the job.



3 A 4.3-inch LCD color display provides all engine diagnostics, increasing ease-of-operation.

4 An enhanced rear-steer indicator is integrated into the operator display for easy viewing of the rear wheel positioning.



5 A dial-control design gives you precise control of ground drive and attachment speeds for increased productivity.

RT70

ATTACHMENTS



MT12 / MT16 MICROTRENCHER

The compatible MT12 and MT16 Microtrenchers let you slice through asphalt or concrete in one seamless pass, leaving minimal disruption for minimal cleanup.

MT12 MICROTRENCHER

	U.S.	METRIC
Trench depth	6.5-12.5 in	165-318 mm
Trench width	0.5-2.0 in	13-50.8 mm

MT16 MICROTRENCHER

Trench depth	0-16 in	0-406 mm
Trench width	0.5-2.0 in	13-50.8 mm

CT70 TRENCHER

Trench depth, max		
Tracks	57.5 in	1461 mm
Tires	61 in	1549 mm
Trench width, max	12 in	305 mm

ST70 TRENCHER

	U.S.	METRIC
Trench depth, max		
Tracks	59.5 in	1521 mm
Tires	63.8 in	1621 mm
Trench width, max	12 in	305 mm

VP70 VIBRATORY PLOW

Cover depth, max (adjustable)	36 in	914 mm
-------------------------------	-------	--------

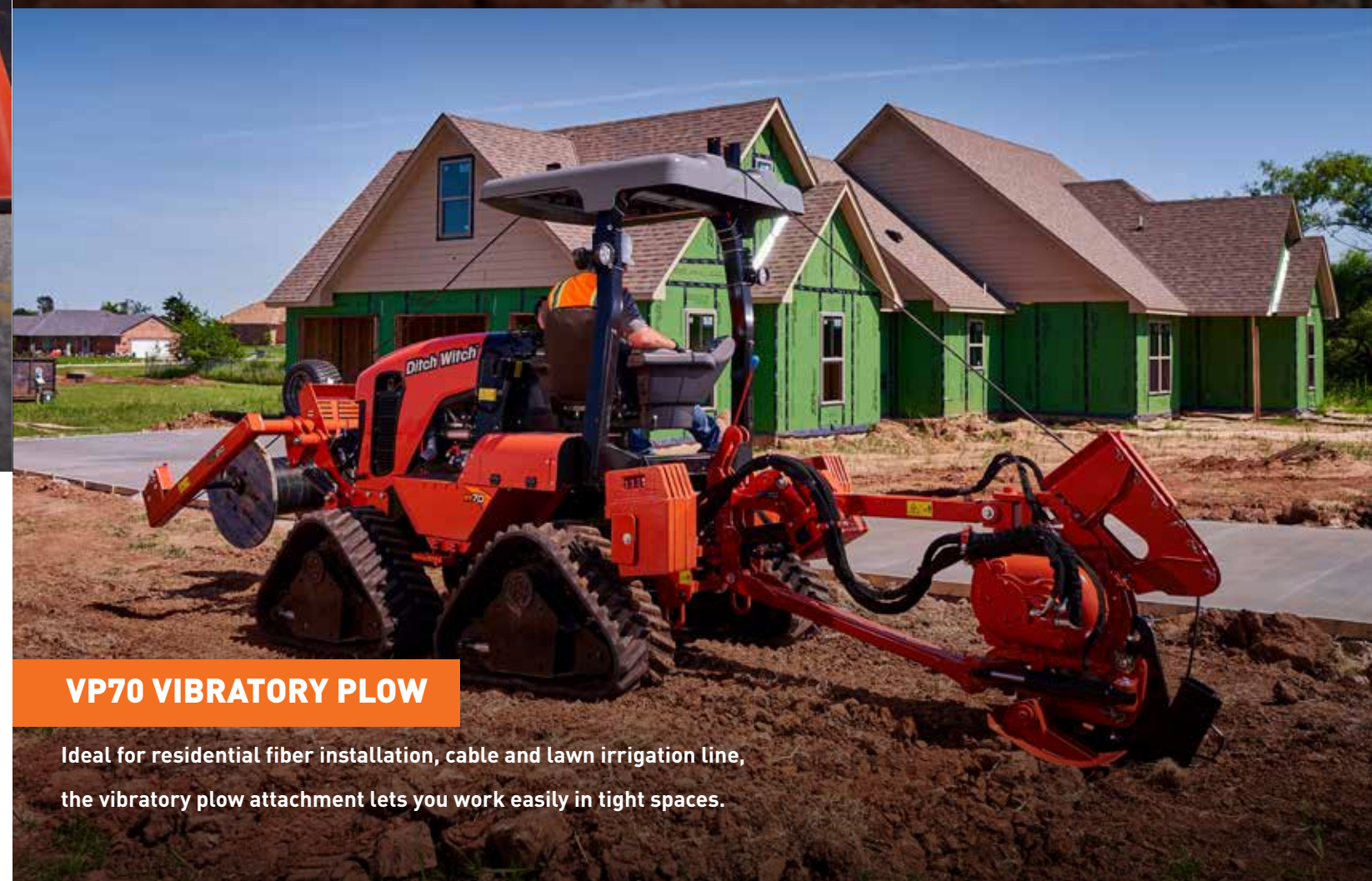
BH70 BACKHOE

Digging depth, max		
Tracks	89.2 in	2266 mm
Tires	93 in	2362 mm
Bucket width	12-24 in	305-609.6 mm



CT70 / ST70 TRENCHER

Power through tough terrain without a hitch with the construction-grade trencher attachment, featuring Ditch Witch-exclusive DuraTooth® digging chain.



VP70 VIBRATORY PLOW

Ideal for residential fiber installation, cable and lawn irrigation line, the vibratory plow attachment lets you work easily in tight spaces.

RT70 RIDE-ON TRENCHER

DIMENSIONS	U.S.	METRIC
Height		
Tracks	104.4 in	2652 mm
Tires, 19.0/45	100.6 in	2555 mm
Tires, solid	100.4 in	2550 mm
Width		
Tracks	78.5 in	1994 mm
Tires, 19.0/45	76.8 in	1951 mm
Tires, solid	71.1 in	1806 mm
Length, transport		
Tracks	142.2 in	3612 mm
Tires, 19.0/45	134.8 in	3424 mm
Tires, solid	133.5 in	3391 mm
Angle of approach		
Tracks	32°	
Tires, 19.0/45	20.8°	
Tires, solid	19.3°	
Tread		
Tracks	60.3 in	1524 mm
Tires, 19.0/45	58.2 in	1478 mm
Tires, solid	54.7 in	1389 mm
Rear axle to attachment mount holes	13.8 in	351 mm
Wheelbase, tracks	63 in	1600 mm

POWER PLANT

Engine	Yanmar® 4TNV98CT	
Fuel	Diesel	
Engine manufacturer's gross power rating [SAE J1995]	72 hp	54 kW
Emissions compliance	Tier 4 Final	Stage V
Cooling medium	Liquid	
Injection	Direct	
Aspiration	Turbocharged	
Number of cylinders	4	
Displacement	202.53 in ³	3.3 L
Bore	3.85 in	98 mm
Stroke	4.33 in	110 mm
Rated speed	2,500 rpm	

POWER TRAIN

Ground drive transmission	2-speed transmission w/ 3-speed bent axis motor	
Differentials	Planetary front and rear w/diff loc	
Parking brake	SAHR	
Tracks	450x85x36, rubber track, chevron pattern	
Tires		
	19.0/45-17 14PR TL	
	19.0/45-17 14PR TL (w/ urethane)	
	33 x 12 (solid)	
Attachment drive transmission	Hydrostatic	

BACKFILL BLADE

Blade width	72 in	1829 mm
Blade height	14.9 in	378 mm

OPERATION	U.S.	METRIC
Forward speed		
Tracks, low	0.79 mph	1.27 km/h
Tracks, high	4.22 mph	6.79 km/h
Tires, low	1.21 mph	1.95 km/h
Tires, high	6.52 mph	10.49 km/h
Tires, solid, low	1.15 mph	1.85 km/h
Tires, solid, high	6.4 mph	10.3 km/h
Vehicle clearance circle (SAE) wall-to-wall w/backfill blade		
Front steer only, tracks	34.99 ft	10.66 m
Front and rear steer, tracks	24.68 ft	7.52 m
Front steer only, tires	31.58 ft	9.63 m
Front and rear steer, tires	23.64 ft	7.21 m
Front steer only, tires, solid	31.28 ft	9.53 m
Front and rear steer, tires, solid	21.85 ft	6.66 m
Ground clearance		
Tracks	14.94 in	379 mm
Tires	11.15 in	283 mm
Tires, solid	9.13 in	232 mm
Basic unit weight		
Tracks	9,590 lb	4350 kg
Tires	6,000 lb	2722 kg
Tires, solid	6,489 lb	2943 kg
Allowable tractor weight, max	17,000 lb	7711 kg
Front counterweight	1,710 lb	776 kg

HYDRAULIC SYSTEM @ 2,500 RPM

Ground drive pump capacity	29 gpm	110 l/min
Ground drive pump relief pressure	4,350-4,800 psi	300-330 bar
Attachment pump capacity	29 gpm	110 l/min
Attachment pump relief pressure	6,400 psi	440 bar
Auxiliary pump capacity		
Front pump (steering)	7.2 gpm	27.5 l/min
Rear pump (auxiliary)	7.2 gpm	27.5 l/min
Side of engine (BH70 supplementary pump)	6.5 gpm	24.5 l/min
Auxiliary pump relief pressure	3,000 psi	207 bar

FLUID CAPACITIES

Fuel tank	25 gal	95 L
Engine oil	11.1 qt	10.5 L
Coolant	3.3 gal	12.3 L
Hydraulic reservoir	12-15 gal	45-56 L
Hydraulic system	18-20 gal	68-75 L

NOISE LEVEL

Operator	91 dBA sound pressure per ISO 6394
Exterior	107 dBA sound power per ISO 6393

VIBRATION LEVEL (WHILE PLOWING)

Hand/arm	13.1 m/sec ²
----------	-------------------------

Specifications are general and subject to change without notice. If exact measurements are required, equipment should be weighed and measured. Due to selected options, delivered equipment may not necessarily match that shown.

For full specifications visit Ditchwitch.com

